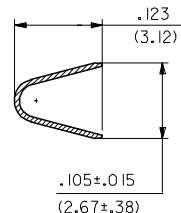
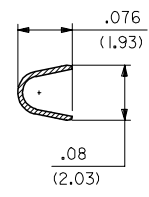


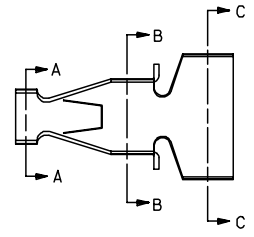
SECTION C-C



SECTION B-B



SECTION A-A



NOTES:

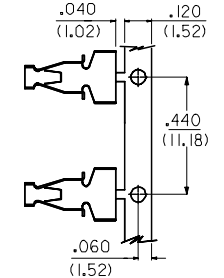
1. MATERIAL: 260 BRASS .008 THK
2. TERMINAL 4706-(***)* ACCEPTS 16 TO 18 AWG WIRE WITH INSULATION DIA OF .120 MAX
3. TERMINALS CONFORM TO SOLDERABILITY SPEC 152
4. PRODUCT SPECIFICATION: PS-4706-001

4706-*(****)*
 BLANK=SEE SHT 1
 3=SEE SHEET 2
 FORM
 BLANK=CHAIN
 L=LOOSE

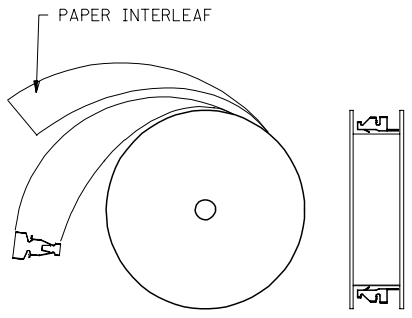
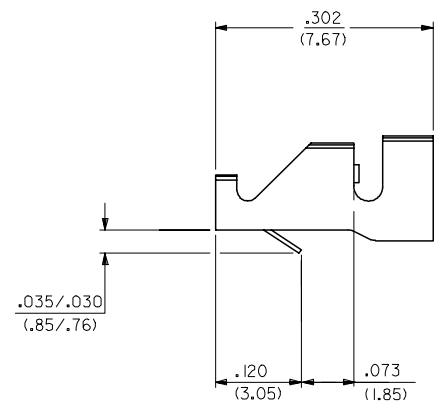
PLATING PER SDES-88

*(P909) OVERALL HOT TIN DIP: 2.54 MICROMETERS MIN

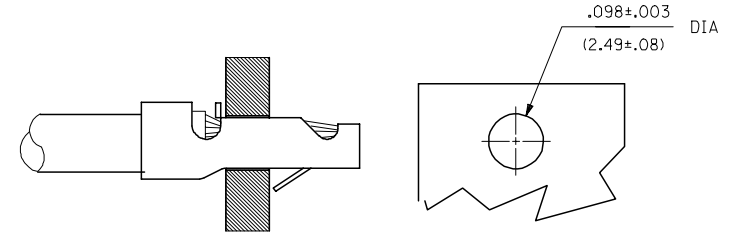
*THE PRIMARY SHIPPING CARTON WILL BE LABELED "COMPLIANT TO ROHS DIRECTIVE 2002/95/EC AND ELV ANNEX II OF DIRECTIVE 2000/53/EC." CARTONS WITHOUT THIS LABEL MAY CONTAIN PRODUCT WITH TIN-LEAD PLATING.



CARRIER DETAIL



WINDING SPEC



RECOMMENDED PC BOARD

4706-(***)*

EDP NO.	ENG NO		
02-09-2105	4706-(P909)		
- -	-()		
- -	-()		

CHANGE TO ME10 EC NO: UCP2005-0966 DRAWN/ADRATNOL 2004/11/19 CHKD: SAMIEC 2004/07/059 APPR: MMARGULIS 2004/11/054	QUALITY SYMBOLS ▽=0 ▽=0
---	-------------------------------

GENERAL TOLERANCES (UNLESS SPECIFIED)	
mm	INCH
4 PLACES ± .010	± .0004
3 PLACES ± .014	± .0005
2 PLACES ± 0.25	± .010
1 PLACE ± 0.36	± .014
ANGULAR ±1/2°	

DRAWN BY SAMIEC	DATE 02/25/92
CHECKED BY PATEL	DATE 02/25/92
APPROVED BY LENZ	DATE 02/25/92

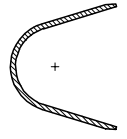
DIMENSION STYLE IN/MM	.062 SCALE ---	DESIGN UNITS INCH	THIRD ANGLE PROJECTION
MATERIAL NO. SEE CHART		DOCUMENT NO. SD-4706	SHEET NO. 1 OF 2
DRAFT WHERE APPLICABLE MUST REMAIN WITHIN DIMENSIONS			
THIS DRAWING CONTAINS INFORMATION THAT IS PROPRIETARY TO MOLEX INCORPORATED AND SHOULD NOT BE USED WITHOUT WRITTEN PERMISSION			

STRAIN RELIEF TERMINAL

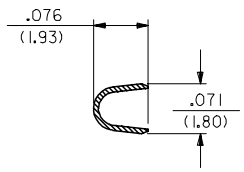
MOLEX MOLEX INCORPORATED

13 12 11 10 9 8 7 6 5 4 3 2 1

J
I
H
G
F
E
D
C
B
A



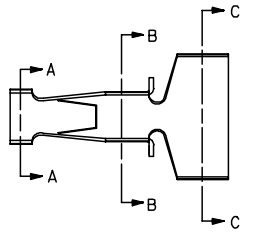
SECTION C-C



SECTION B-B



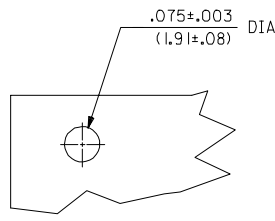
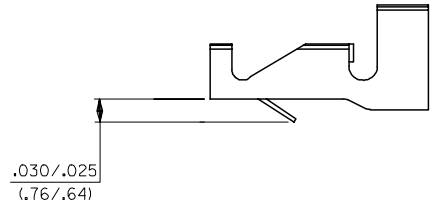
SECTION A-A



NOTES:

1. THIS PART IS THE SAME AS SHEET 1 EXCEPT AS SHOWN
2. MATERIAL: 260 BRASS .006 THK
3. FINISH: (909) * OVERALL HOT TIN DIP: 2.54 MICROMETERS MIN.
4. TERMINAL 4706-3(***)* ACCEPTS 18 TO 24 AWG WIRE WITH INSULATION DIA OF .120 MAX

*THE PRIMARY SHIPPING CARTON WILL BE LABELED 'COMPLIANT TO RoHS DIRECTIVE 2002/95/EC AND ELV ANNEX II OF DIRECTIVE 2000/53/EC.' CARTONS WITHOUT THIS LABEL MAY CONTAIN PRODUCT WITH TIN-LEAD PLATING.



RECOMMENDED PC BOARD
.062 THK

4706-3(***)*			
EDP NO.	ENG NO.		
02-07-2101	4706-3(P909)		

CHANGE TO ME10 EC NO: UCP2005-0966 DRW:ADRATNOL 2004/11/19 CHKD: SAMIEC 2004/11/19 APPR: YMARGULIS 2004/11/04	QUALITY SYMBOLS	GENERAL TOLERANCES (UNLESS SPECIFIED)	DIMENSION STYLE IN/MM	SCALE ---	DESIGN UNITS INCH	THIRD ANGLE PROJECTION	
	▽=0	mm INCH	DRAWN BY DATE			TITLE	
	▽=0	4 PLACES ± --- ± ---	SAMIEC 02/25/92			STRAIN RELIEF TERMINAL	
		3 PLACES ± --- ± .010	CHECKED BY DATE				
	2 PLACES ± 0.25 ± .014	PATEL 02/25/92					
	1 PLACE ± 0.36 ± ---	APPROVED BY DATE					
	ANGULAR ±1/2°	LENZ 02/25/92					
	DRAFT WHERE APPLICABLE MUST REMAIN WITHIN DIMENSIONS	MATERIAL NO.	SIZE C				
		SEE CHART					
		MOLEX INCORPORATED					
		DOCUMENT NO.					
		SD-4706					
		SHEET NO.					
		2					
		THIS DRAWING CONTAINS INFORMATION THAT IS PROPRIETARY TO MOLEX INCORPORATED AND SHOULD NOT BE USED WITHOUT WRITTEN PERMISSION					

12 11 10 9 8 7 6 5 4 3 2 1

J
I
H
G
F
E
D
C
B
A